



InnoRenew CoE

Livade 6, 6310 Izola/Isola, Slovenia

T: +386 40 282 944, E: coe@innorenew.eu, www.innorenew.eu



How could libraries support researchers in making data FAIR?

Dr. Ana Slavec

Consulting statistician

Research Libraries, Researchers & the ESOC: Central/Eastern European Landscape

January 20 2021



FAIR data principles

- Findability
- Accessibility
- Interoperability
- Reusability

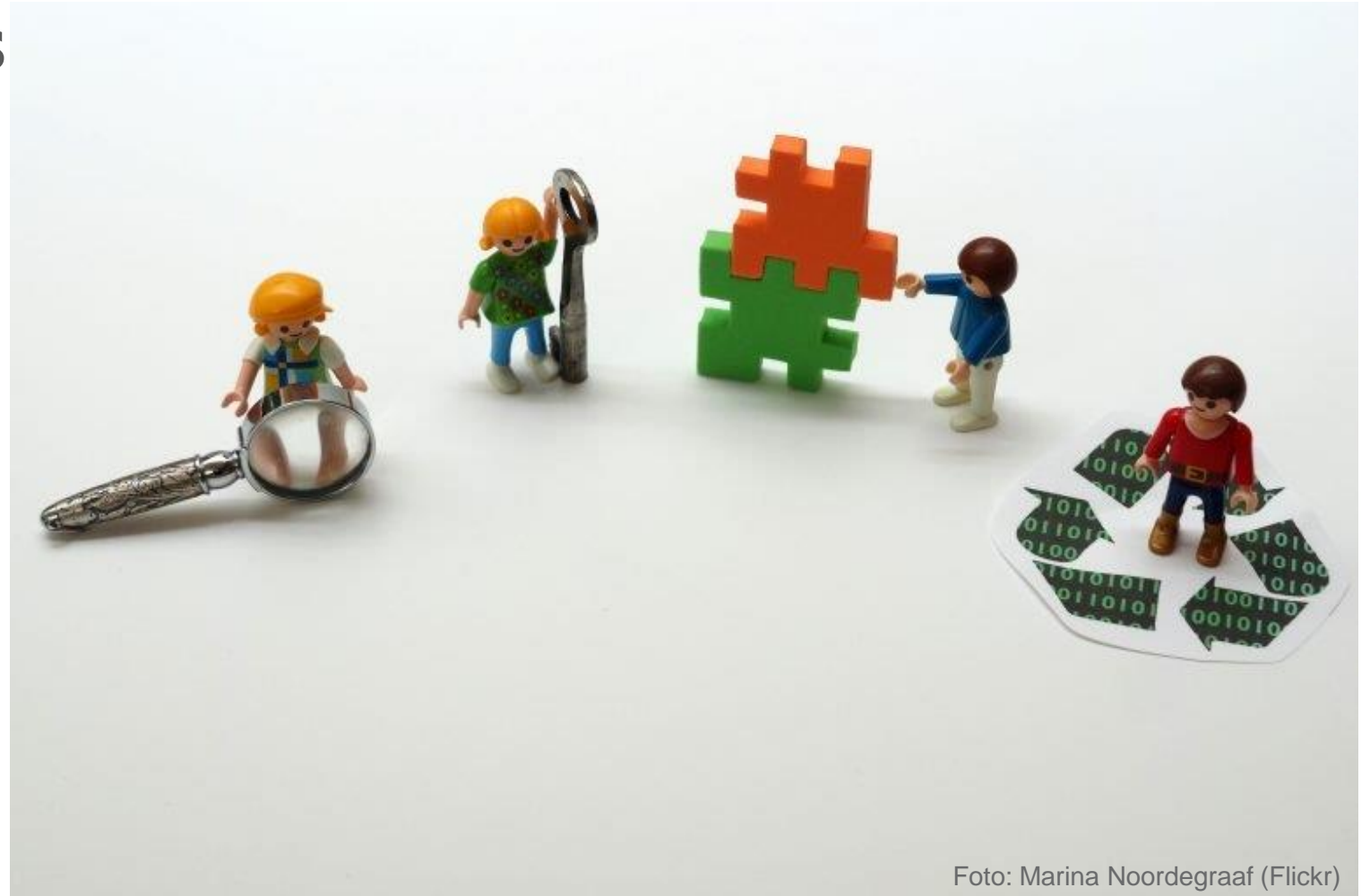


Foto: Marina Noordegraaf (Flickr)



InnoRenew CoE

www.innorenew.eu

Publications of the EOSC FAIR WG





Some of the challenges

- Low awareness of both open science and FAIR data
- Lack of training opportunities
- There are big disciplinary differences so there are no global rules and each scientific community needs to agree on data formats, vocabularies, metadata standards and data sharing procedures
- FAIR data sharing is not recognised and rewarded



InnoRenew CoE

www.innorenew.eu

How can libraries help?

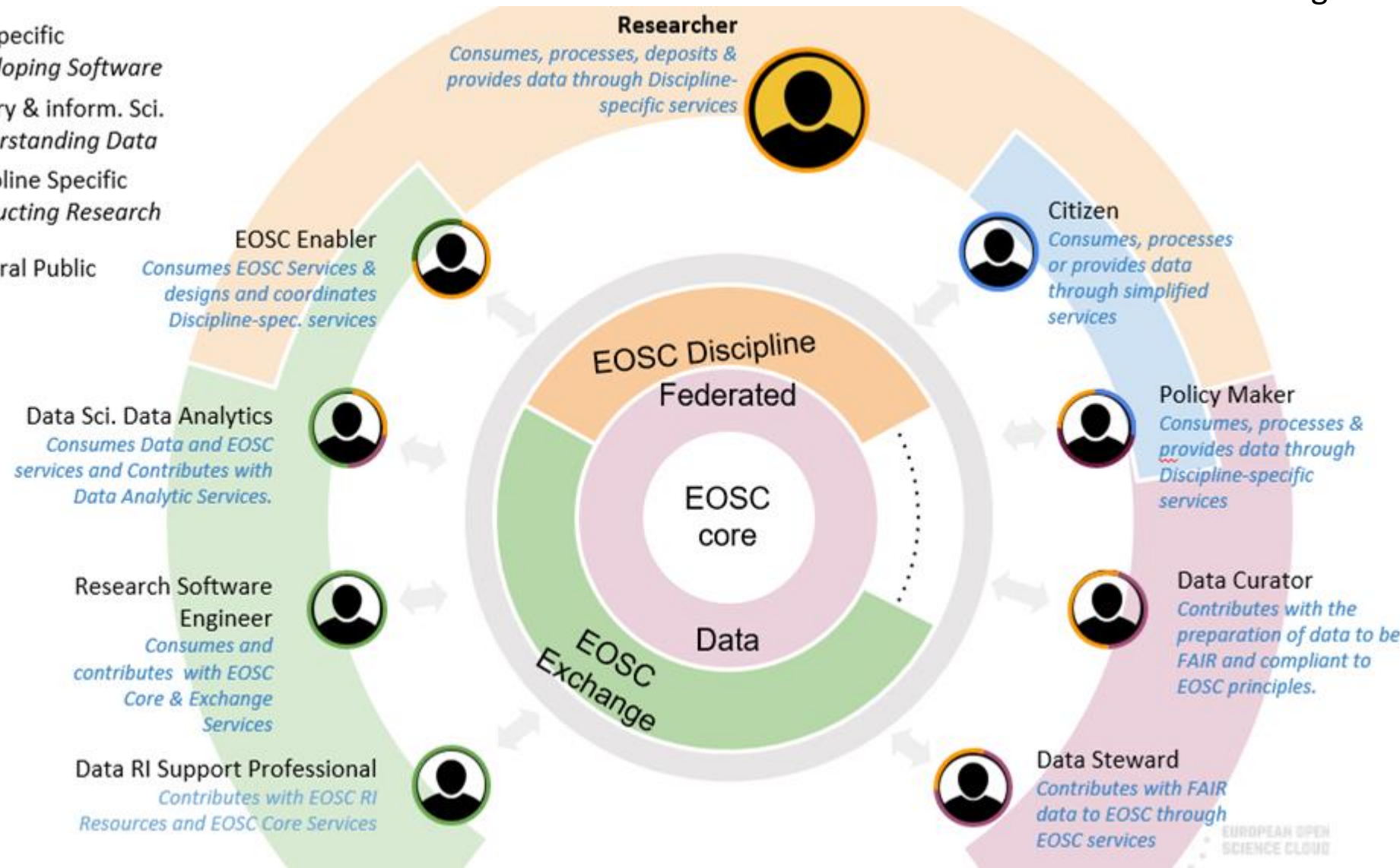
1. Awareness-raising activities to promote FAIR principles
2. Organise training events
3. (Community-specific) support in making data FAIR
4. Suggest improvements to current research assessment practices



Training and skills

Source: EOSC Skills & Training WG

- ICT-Specific
Developing Software
- Library & inform. Sci.
Understanding Data
- Discipline Specific
Conducting Research
- General Public





InnoRenew CoE

www.innorenew.eu

RDA resources to help librarians engage in research data management



23 Things: Libraries for Research Data

An overview of practical, free, online resources and tools that you can begin using today to incorporate research data management into your practice of librarianship.

Research Data Sharing Without Barriers

Learning Resources

Librarians are learning how to apply the principles of library science to solve problems and to provide new services related to research data.

1. A "top ten" list of **recommendations** for libraries to get started with research data management from LIBER, <http://bit.ly/RDAthing1>
2. Relevant concepts are presented and mapped in the **e-Science Thesaurus**,

Learning Resources
Data Reference and Outreach
Data Management Plans
Data Literacy
Citing Data
Data Licensing and Privacy
Digital Preservation
Data Repositories
and a Community of Practice

*..to help librarians engage in
research data management!*

10. Questions about data answered by experts on the **DataQ** forum, <http://bit.ly/RDAthing10>

Data Management Plans

Librarians are becoming familiar with funder requirements and consulting with researchers to help them write and implement effective data management plans.

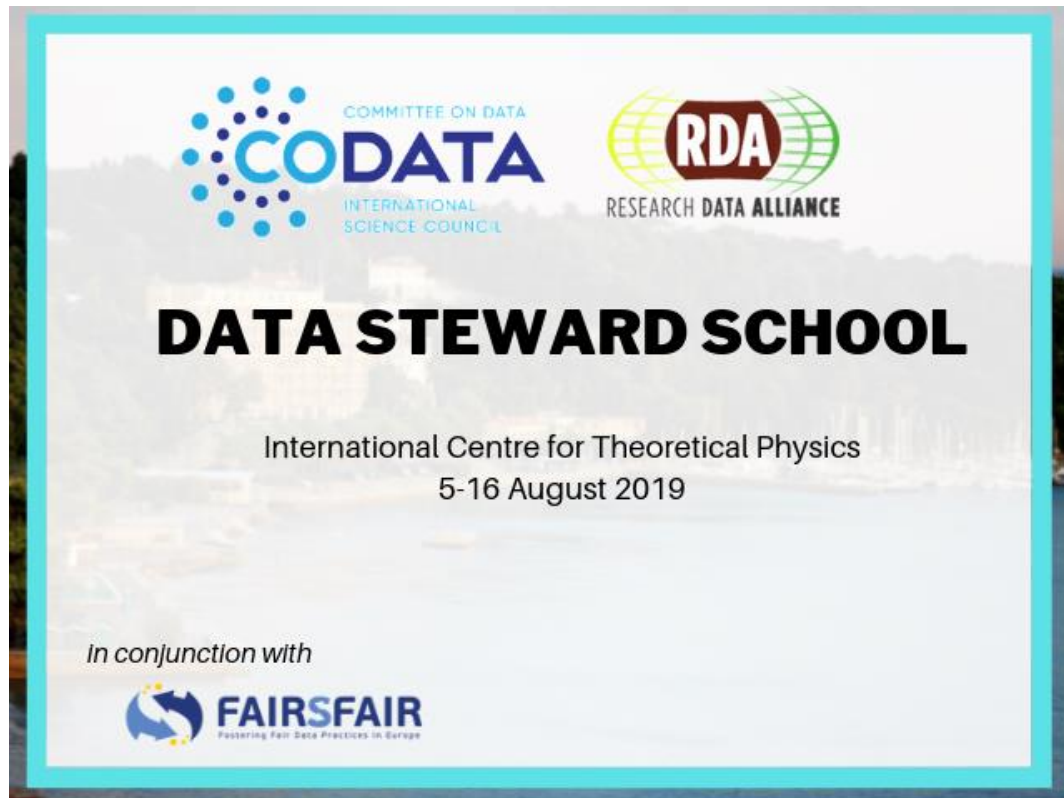
11. One example is the **DMPTool** that lists funder requirements in the United States and builds a plan by



InnoRenew CoE

www.innorenew.eu

Data steward school





InnoRenew CoE

Livade 6, 6310 Izola/Isola, Slovenia

T: +386 40 282 944, E: coe@innorenew.eu, www.innorenew.eu



Thank you for your attention!