

# The H2020 Project LEARN – Sustainable Outreach and Long Term Impact on Communities

Dr Paul Ayris

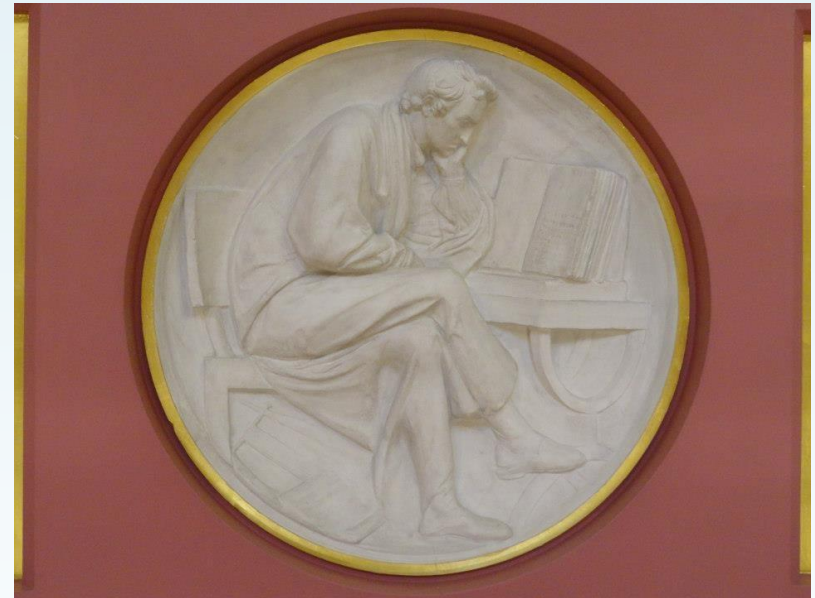
Pro-Vice-Provost (UCL Library Services)  
Co-Chair of the INFO LERU community  
Adviser to the LIBER Board  
Chair Jisc Content Strategy Group  
e-mail: [p.ayris@ucl.ac.uk](mailto:p.ayris@ucl.ac.uk)



This project has received funding from the European Union's Horizon 2020 research and innovation programme under grant agreement No 654139.

# Content

- ☐ LEARN
  - ☐ Partnership
  - ☐ Issues
- ☐ Deliverables
  - ☐ Model RDM policy
  - ☐ Executive Briefing in 6 languages
  - ☐ Toolkit of Best Practice Case Studies
  - ☐ RDM readiness survey
  - ☐ Key Performance Indicators
  - ☐ 20 RDM Best Practice Recommendations



Plaster Relief by John Flaxman,  
Flaxman Gallery, UCL

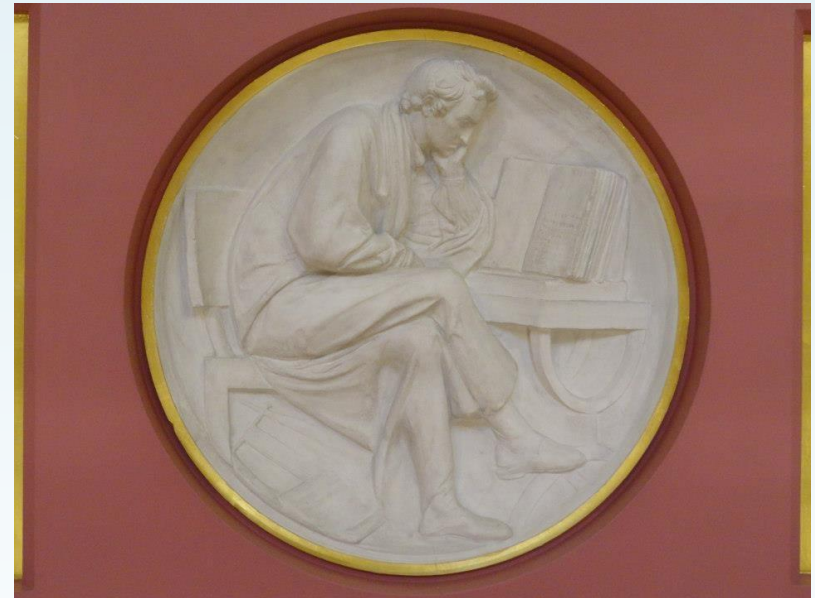
# Content

## ☐ LEARN

- ☐ Partnership
- ☐ Issues

## ☐ Deliverables

- ☐ Model RDM policy
- ☐ Executive Briefing in 6 languages
- ☐ Toolkit of Best Practice Case Studies
- ☐ RDM readiness survey
- ☐ Key Performance Indicators
- ☐ 20 RDM Best Practice Recommendations



Plaster Relief by John Flaxman,  
Flaxman Gallery, UCL

# LEARN

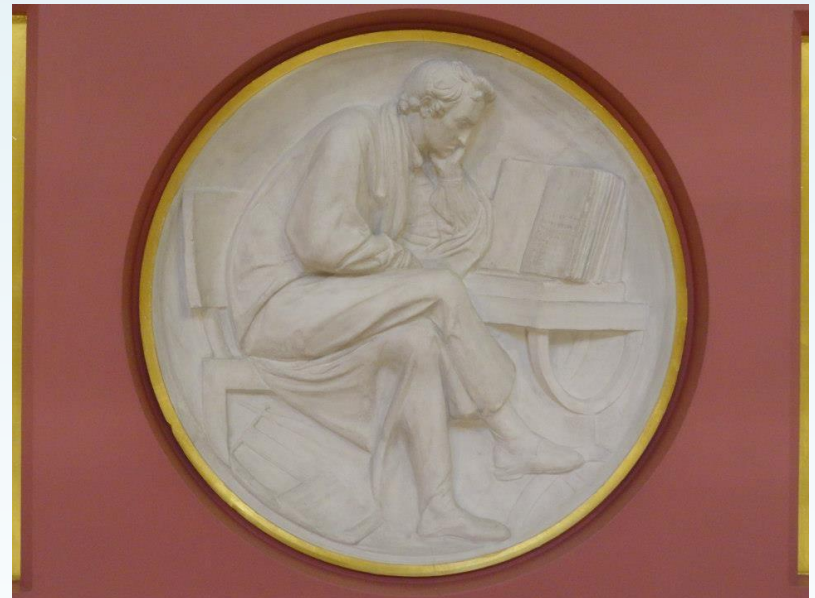
- ❑ 5 partners
  - ❑ UCL (University College London) – lead partner
  - ❑ University of Barcelona
  - ❑ University of Vienna
  - ❑ LIBER
  - ❑ ECLAC – UN Commission for Latin America and the Caribbean
- ❑ Started in June 2015; runs for 24 months
- ❑ €497,000 budget
  - ❑ 100% funded



Wilkins Building, UCL, 1826

## What is the problem **LEARN** seeks to address?

- ❑ How prepared are you and your institution for RDM?



Plaster Relief by John Flaxman,  
Flaxman Gallery, UCL



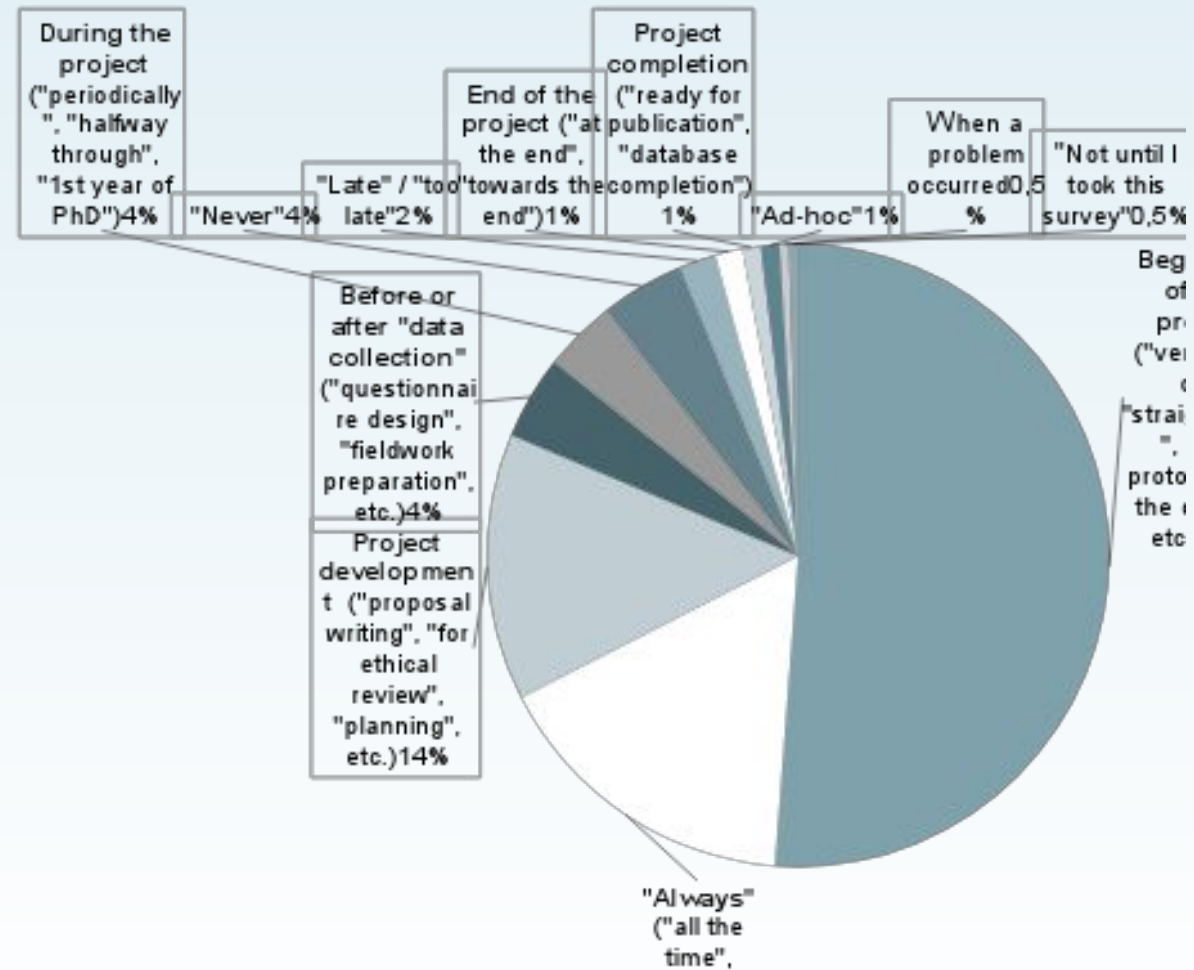
# UCL survey by Research Data Advocacy Officer



- ☐ 130 research departments, institutes, centres and units represented in survey
- ☐ Response rate – 306 completed surveys out of 619
- ☐ Respondents
  - ☐ 18% early career researchers
  - ☐ 39% experienced researchers
  - ☐ 30% research students

**Qu.61 At what stage of the project did you think about data management?**

(217 respondents; free text)



# Content

## ☐ LEARN

- ☐ Partnership
- ☐ Issues

## ☐ Deliverables

- ☐ Model RDM policy
- ☐ Executive Briefing in 6 languages
- ☐ Toolkit of Best Practice Case Studies
- ☐ RDM readiness survey
- ☐ Key Performance Indicators
- ☐ 20 RDM Best Practice Recommendations



Plaster Relief by John Flaxman,  
Flaxman Gallery, UCL

<http://learn-rdm.eu/en/dissemination/>





Guidance for Developing a Research Data Management (RDM) Policy

- ❑ Main elements of an RDM Policy:
  - ❑ Identify issues behind and ownership of policy
    1. Preamble, setting policy statements into a local context
    2. Scope of the policy – who it covers and how it deals with current legal commitments
    3. Intellectual Property Rights
    4. Handling research data – curation, destruction
    5. Responsibilities, Rights, Duties
    6. Review period for the policy
  - ❑ Annex of appropriate definitions to help with policy development

# Palo Budroni and the University of Vienna: LEARN Model RDM Policy (drawn from evaluation of 20 European policies)

2017

| Criteria   | Status - Overview                          |   |                               |
|--|--|---|-------------------------------|
| <u>Number of institutions: 20</u>                | It was <b>NOT</b> taken into consideration | It was <b>PARTLY</b> taken into account | It has been <b>CONSIDERED</b> |
| 1. Authorship.                                   |  | +++ +++                                 |                               |
| 2. Validity                                      |  | +++ +++                                 | +++                           |
| 3. Review  | +++ +++                                    |   | +++                           |
| 4. Subject                                       |  |   | +++ +++ +++                   |
| 5. Scope and coverage                            |  | +++                                     | +++ +++                       |
| 6. Preliminaries and definitions                 |  | +++                                     | +++ +++                       |
| 7. Institutional awareness, support and services |  | +++                                     | +++ +++                       |
| 8. Objectives ("what and how")                   |  | +++ +++                                 | +++                           |
| 9. Roles and responsibilities                    |  | +++                                     | +++ +++                       |
| 10. DMP  |  |   | +++ +++ +++                   |
| 11. Costs  | +++  | +++ +++                                 |                               |
| 12. External                                     |  | +++                                     | +++                           |
| 13. Ownership                                    | +++  | +++                                     | +++                           |
| 14. Retention                                    | +++ +++                                    |   | +++                           |
| 15. Deletion                                     | +++ +++ +++                                |   |                               |
| 16. Legal aspects                                |  | +++                                     | +++ +++                       |
| 17. Ethics                                       |  | +++                                     | +++                           |
| 18. Open data / restricted data / closed data    |  | +++ +++                                 | +++                           |
| 19. Storage and access                           |  | +++                                     | +++ +++                       |
| 20. Metadata curation                            | +++  |   | +++                           |
| 21. Exceptions                                   | +++  | +++                                     | +++                           |
| 22. Research infrastructure                      | +++ +++                                    | +++                                     | +++                           |
| 23. Long tail of data / head of project data     | +++ +++ +++                                |   |                               |
| 24. Educational data                             | +++ +++ +++ +++                            |   |                               |
| 25. Cultural heritage                            | +++ +++ +++ +++                            |   |                               |



## Executive Briefing

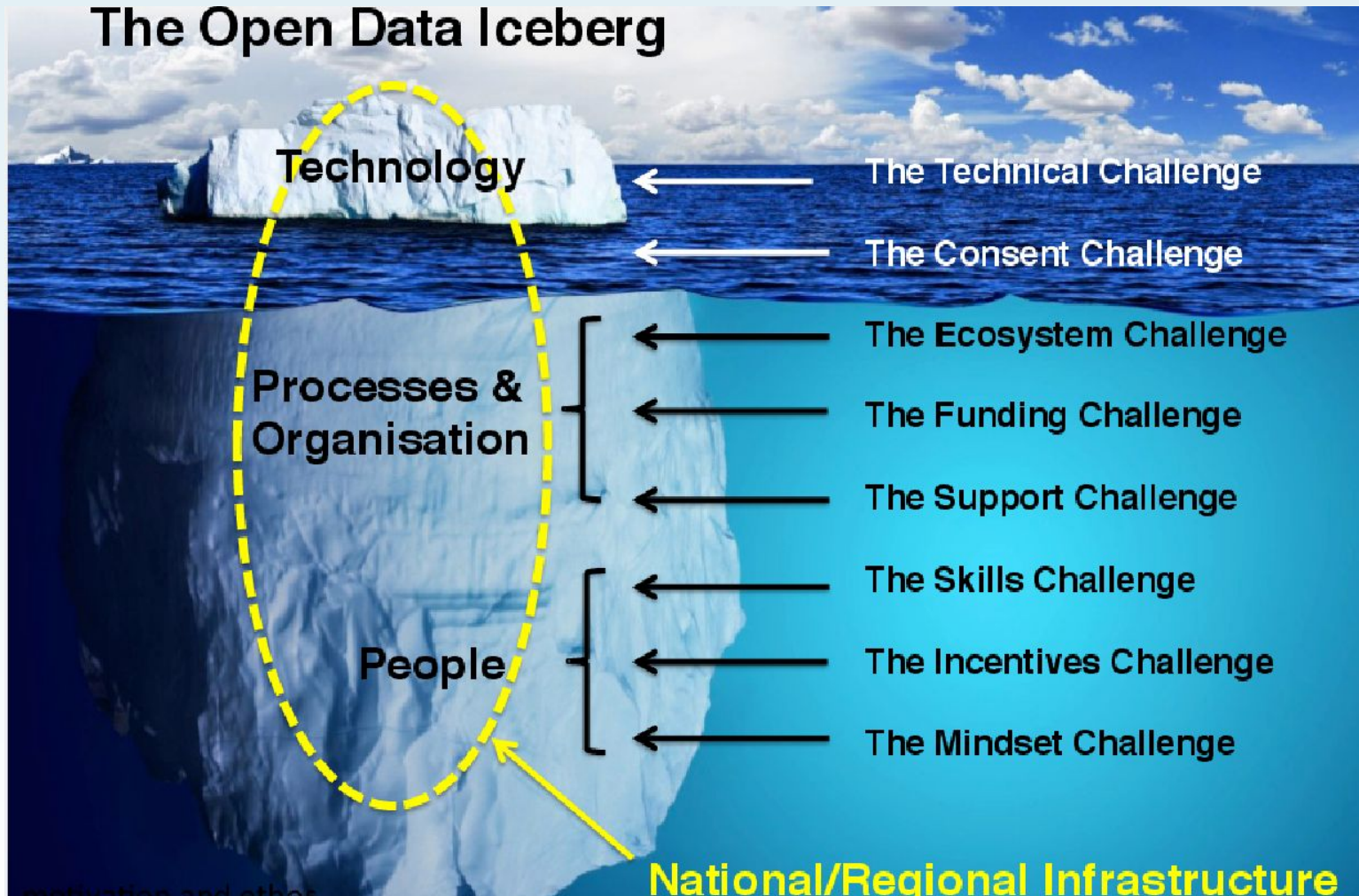
- ❑ Executive Briefing in 6 languages which presents strategic issues for decision makers
- ❑ Presents the RDM challenge, Solutions, the need for an RDM Policy, the benefits of FAIR data, the requirement for RDM stewardship, infrastructure and training and RDM funding needs



**LEARN Toolkit of Best Practice  
for Research Data |  
Management**

- ❑ 23 chapters of Best Practice Case Studies in 8 sections of **Toolkit**
  - ❑ Policy and Leadership
  - ❑ Advocacy
  - ❑ Subject approaches
  - ❑ Open Data
  - ❑ Research Data Infrastructure
  - ❑ Costs
  - ❑ Roles, Responsibilities, Skills
  - ❑ Tool development

## Case Study 11: Professor Geoffrey Boulton: Why Open Data?





## Case Study 18: Paul Ayris & Ignasi Labastida: Training Early Career Researchers

- ❑ LERU (League of European Research Universities) held week-long Doctoral Summer School in July 2016 on research data
- ❑ UCL (University College London) has begun a Training Programme with the Doctoral School

| WHO  | Postgrad/PhD   | Senior Researcher  | Librarian   | Data Scientist  |
|------|--|--|---|---|
| WHEN | Early stages of postgraduate study   | As needed, or at beginning of research project/proposal state  | CPD for subject librarians/during library education   | Discipline-specific academic courses (doctoral)/CPD   |
| WHAT | Basics of data management practice, FAIR principles, data citation, data evaluation. Competence in legal and ethical issues. | Training on discipline-specific data management practices; an understanding of the FAIR principles; how to write a data management plan (tailored as necessary to funder requirements), data reuse skills. Competence in legal and ethical issues. | Data curation. An understanding of the FAIR principles. Some disciplinary-specific e-research methods (TDM)/data collection skills, IT skills. Competence in legal and ethical issues | Discipline-specific skills for data management/exploitation/interoperability. An understanding of the FAIR principles. Competence in legal and ethical issues |
| HOW  | Credited models  | Practical training   | Accredited CPD/Professional courses   | Professional (academic) courses and accredited CPD  |



About LEARN ▾

Partners ▾

Deliverables


LEARN Events ▾

Dissemination ▾

Blog

News

Further Reading ▾

 Español

# Test Your RDM Readiness

Take the survey

**Take the survey -**  
<http://learn-rdm.eu/en/rdm-readiness-survey/>

**Test your RDM  
readiness!**



## Case Study 23: Paul Ayris & Ignasi Labastida: Surveying your level of preparation for research data management

- ❑ 13 Questions
- ❑ Answers Red, Amber, Green (RAG)
- ❑ Score reveals your level of preparation
- ❑ Survey can be taken iteratively to show progress
- ❑ 373 responses (May17)

### [SURVEY: Is your institution ready for managing research data?

The LEARN project has compiled the following survey as a self-assessment tool to assist institutions discover how ready they are for managing research data. The survey is based on the issues posed to institutions by the [LEARN Roadmap for Research Data](http://www.learn-rdm.eu/material/learn_roadmap_for_research_data) published at the end of 2013, and available at: [http://www.learn-rdm.eu/material/learn\\_roadmap\\_for\\_research\\_data](http://www.learn-rdm.eu/material/learn_roadmap_for_research_data).

The survey has thirteen questions addressing the main elements to be taken into account in developing an institutional strategy for research data management. Each question has three possible answers representing green, yellow or red light. The more 'green light' responses recorded, the readier an institution probably is for managing its research data. We encourage you to complete the questionnaire online which is available at: <http://www.learn-rdm.eu>

The Survey is iterative, in that it can (once taken) be re-taken at regular intervals. Changes in the scores will themselves illustrate the level of progress made in the intervening period.

#### 1. Policy

- My institution has a policy on research data
- My institution is working in a policy on research data
- My institution has no policy regarding research data

#### 2. Leadership

- My institution has a steering committee on research data
- My institution is working in setting up a working group to develop services and policies on research data
- There is no dedicated group on research data at my institution

#### 3. Roles

- My institution has established new roles to steward the management of research data
- Some staff are shifting part of their work to involve the management of research data
- There is no one dedicated to research data

#### 4. Information (services)

- My institution has an information point/helpdesk/webpages on research data management
- There is someone at/in the university library/research office who can give advice on research data management to researchers
- No service at my institution provides clear information on research data management

#### 5. Dissemination (awareness)

- My institution has created some materials on the management of research data
- There are some links with information on research data on the library/research office website
- Researchers need to look outside my institution for information on the management of research data

#### 6. Infrastructure

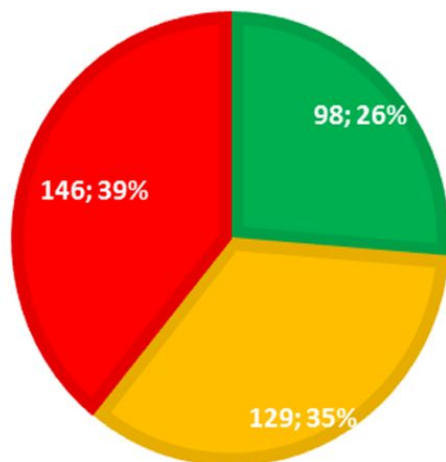
- My institution provides an infrastructure to manage research data through the complete research cycle



learn

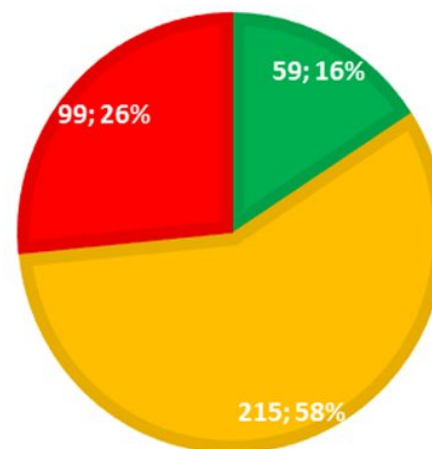
## POLICY

- My institution has a policy on research data
- My institution is working in a policy on research data
- My institution has no policy regarding research data



## INFRASTRUCTURE

- My institution provides an infrastructure to manage research data through the complete research cycle
- My institution provides some services for managing data but not through the complete research cycle
- Researchers need to use external facilities to manage their data



## Appendix C - KPI Scoreboard

| Number | KPI  | Measurement  | Expected Final Value       | Actual value | Red/Amber/Green |
|--------|--|--|----------------------------|--------------|-----------------|
| P1     | Institutional policy   | Policy exists  | YES                        |              |                 |
| P1.1   | Alignment with the LEARN RDM Model   | Review of items in Policy which are included in the LEARN model                                      | 90%                        |              |                 |
| P2     | Steering committee dedicated to RDM  | Steering Committee exists  | YES                        |              |                 |
| P3     | Services created to work on RDM  | Number of new services created   | >1                         |              |                 |
| P4     | Staff involved in RDM  | FTE staff dedicated to RDM   | >1                         |              |                 |
| P5     | Job profiles dedicated to RDM  | Number of new job profiles created or updated  | >1                         |              |                 |
| P6     | Information point on RDM   | Information Point exists   | YES                        |              |                 |
| P8     | Training sessions on RDM   | Number of sessions developed in a year   | >5                         |              |                 |
| I1     | Monitoring of the institutional policy   | Monitoring activity exists   | YES                        |              |                 |
| I1.1   | Review of the policy   | Number of reviews in a year  | 1                          |              |                 |
| I1.2   | Updates of the policy  | Number of updates since its enforcement  | < 1/year                   |              |                 |
| I2     | Disciplines engaged in RDM within the research institution                                     | Percentage of disciplines engaged in RDM activities  | 90%                        |              |                 |
| I3     | Datasets stored in the policy-designated infrastructure(s)                                     | Number of datasets stored  | Increasing year after year |              |                 |
| I4     | Datasets published in the policy-designated platform(s) with a clear statement on terms of use | Number of datasets published with a clear statement (I4.1) / Number of all datasets published (I4.2) | 100%                       |              |                 |

| Number | KPI  | Measurement   | Expected Final Value | Actual value | Red/Amber/Green |
|--------|--|---|----------------------|--------------|-----------------|
| I5     | Persistent identifiers for published research data                     | Number of persistent identifiers  | I4.1                 |              |                 |
| I6     | Datasets stored outside the policy-designated infrastructure           | Number of datasets stored   | < 13                 |              |                 |
| I6.1   | Number of datasets shared outside the policy-designated infrastructure | Number of datasets shared outside the policy-designated infrastructure  | < I4.2               |              |                 |
| I7     | Active researchers using policy-designated facilities                  | Percentage of active researchers using facilities   | 90%                  |              |                 |
| I8     | Amount of research income dedicated to RDM activities                  | Percentage of research income dedicated to RDM. The costs should include infrastructure (I8.1), staff (I8.2), and activities (I8.3) | >5%                  |              |                 |
| I9     | Training sessions on RDM   | Number of sessions developed in a year  | >1                   |              |                 |
| I9.1   | Active researchers attending training sessions                         | Percentage of active researchers attending training sessions in a year  | >10%                 |              |                 |
| I10    | Queries for support received   | Number of queries in a year   | >10                  |              |                 |
| I11    | Data Management Plans created  | Number of plans created   | >10                  |              |                 |
| I11.1  | Data Management Plans published  | Number of plans published   | 90% of I11           |              |                 |
| I12    | Incidences   | Number of incidences in RDM activities in a year  | < 50                 |              |                 |
| I12.1  | Datasets deleted   | Number of datasets deleted from the designated storage facility   | <1% of I3            |              |                 |
| I12.2  | Datasets withdrawn   | Number of datasets deleted from the designated storing facility   | <1% of I3            |              |                 |





## 20 Best Practice Recommendations

- ☐ 20 Recommendations derived from the RDM community attending LEARN Workshops
  - ☐ Policy and Leadership
  - ☐ Open Data
  - ☐ Advocacy
  - ☐ Costs
  - ☐ Roles, Responsibilities and Skills

## Next Steps

- ❑ LEARN outputs being considered to support a major global statement on research data and open data
- ❑ LEARN II – to develop a toolkit to measure readiness for Open Science – now being drawn up for submission for project funding



LEARN I Worksop, Santiago, Chile

## And finally...

- ☐ Thank you for listening
- ☐ Happy to answer any questions



LEARN I Worksop, Vienna, Austria